

General Budget Information

Table of Contents

Board of Supervisors and County Officials	A-2
Organizational Chart	A-3
Purpose, Mission, Vision, and Values	A-4



THE BOARD OF SUPERVISORS



DISTRICT 1
Phil Serna



DISTRICT 2
Patrick Kennedy



DISTRICT 3
Rich Desmond



DISTRICT 4
Sue Frost



DISTRICT 5
Pat Hume



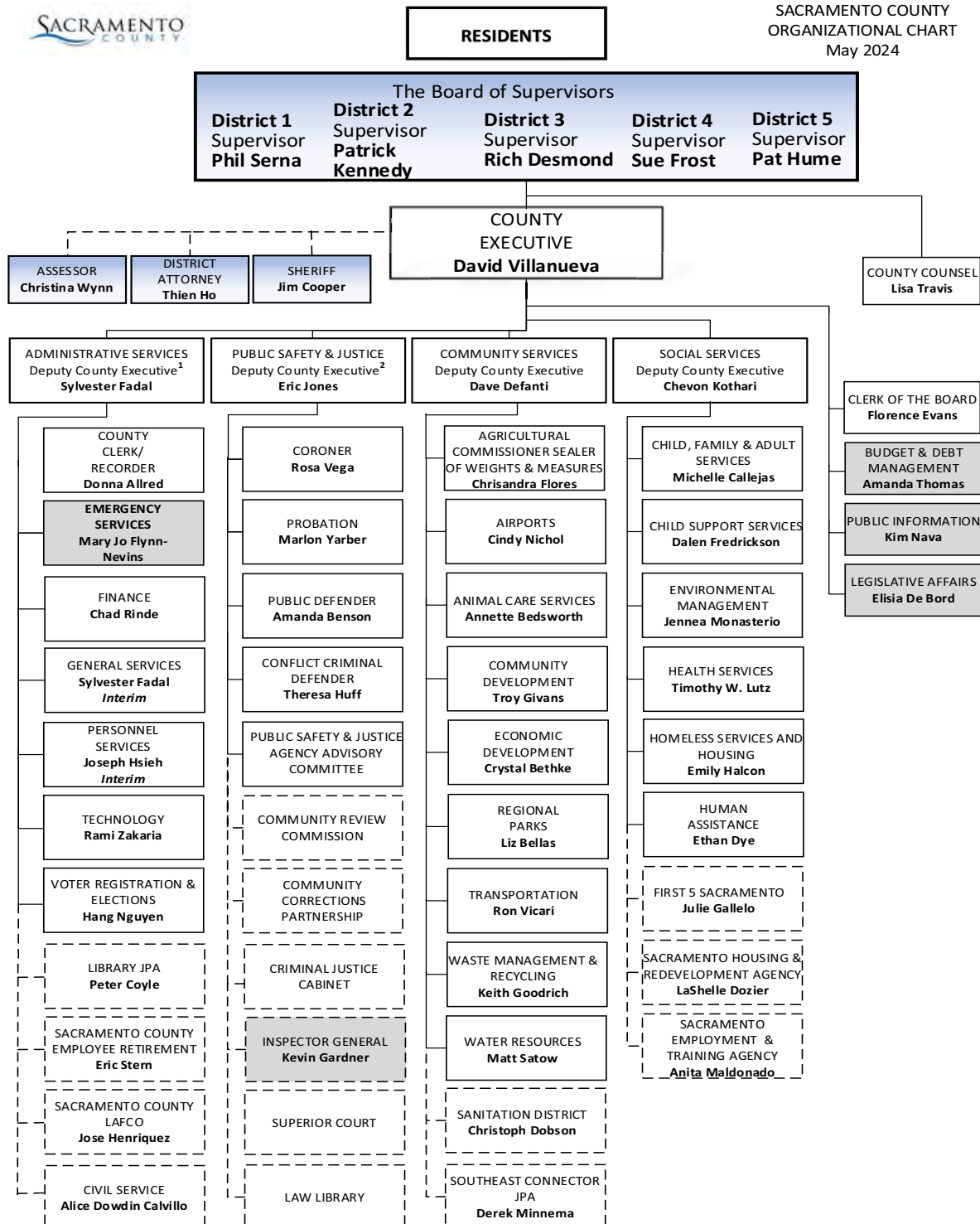
COUNTY EXECUTIVE
David Villanueva



COUNTY COUNSEL
Lisa Travis



SACRAMENTO COUNTY
ORGANIZATIONAL CHART
May 2024



Notes:

- 1 – Liaison to Assessor
- 2 – Liaison to District Attorney and Sheriff

Legend

- Elected Officials
- "Office of..."
- Line of Direct Authority
- - - Coordinative Relationship

Purpose, Mission, Vision, and Values

Core Purpose

A core purpose is a statement that defines our organization's reason for being.

Enriching Communities to Thrive

Vision

A vision is a compelling conceptual image of the desired future. This statement describes “what we want to be.”

We are a Premier, Trusted Employer and Organization, Serving Our Communities with Transparency, Courage and Innovation

Mission

A mission statement describes what we do every day for the community.

Improve residents’ quality of life by providing cost-effective public services while fostering economic health, regional cooperation and stewardship of community assets.

Values

These values are the essential and enduring tenets of the County of Sacramento.

These guiding principles govern the way we make and carry out our decisions.

Our Values for Sacramento County are:

- **Principled**, by that we mean we act with honesty and integrity, earning and maintaining trust.
- **Respect**, by that we mean we listen and give voice to others and treat them with compassion, empathy and dignity.
- **Innovation**, by that we mean we encourage creativity, look for and implement improvements, stretching our comfort zones.
- **Diversity and Inclusion**, by that we mean we are committed to having a diverse workforce reflective of our community; we embrace differences in people, skills, knowledge, experiences and opinions and practice inclusive decision-making, collaboration and teamwork.
- **Excellence**, by that we mean we are committed to investing in employees, being transparent, delivering high quality, responsive services.